

2024

ADVANCE

# LOCK COLLECTION



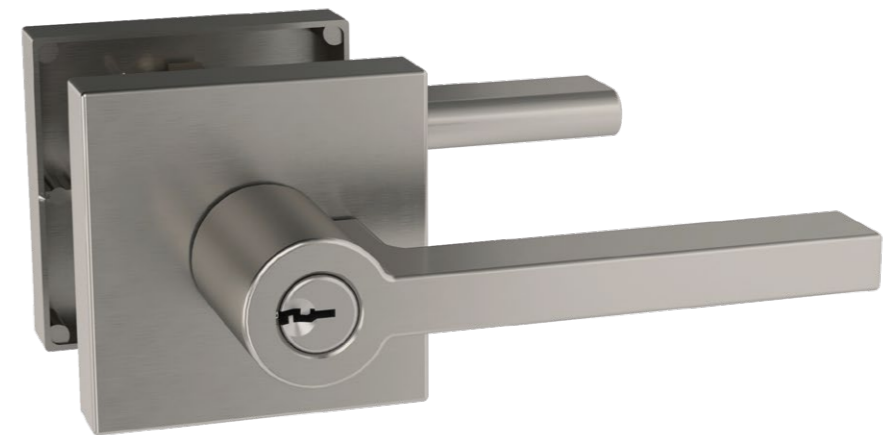
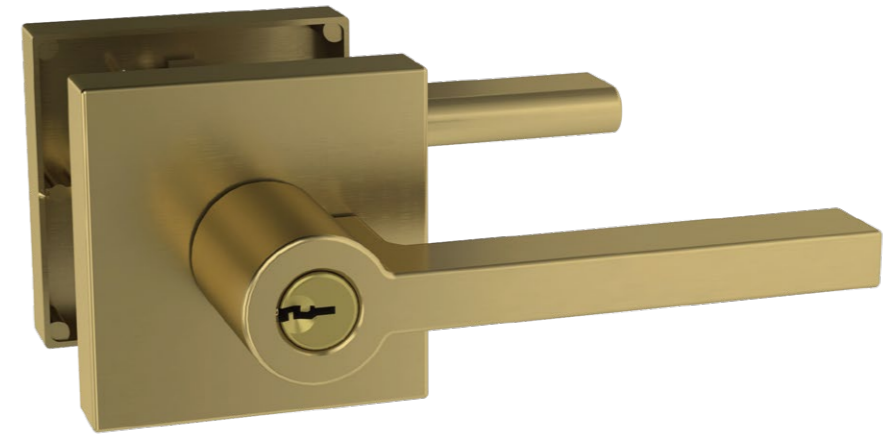
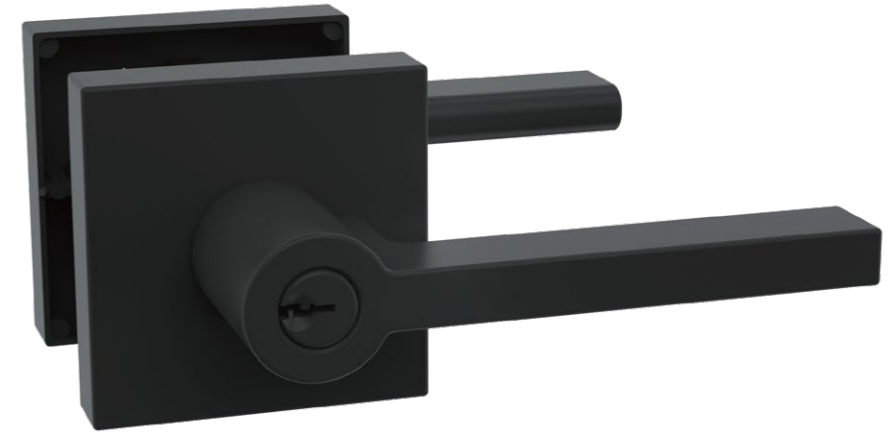


**HEAVY DUTY  
TUBULAR LEVER LOCK**

HP5277ET



HP5278ET



ADVANCE  
ADVANCE

HP5271ET

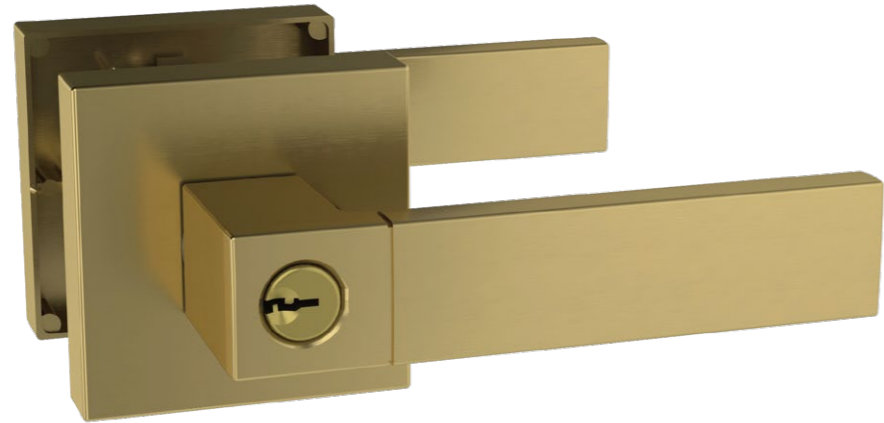
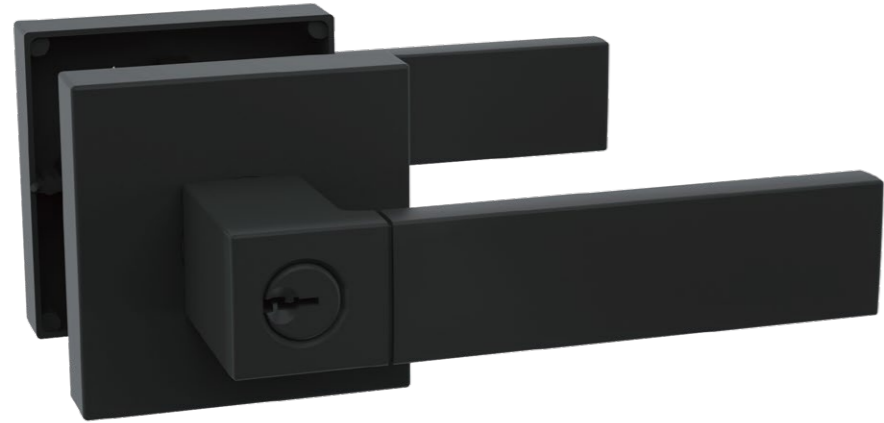


HP5272ET

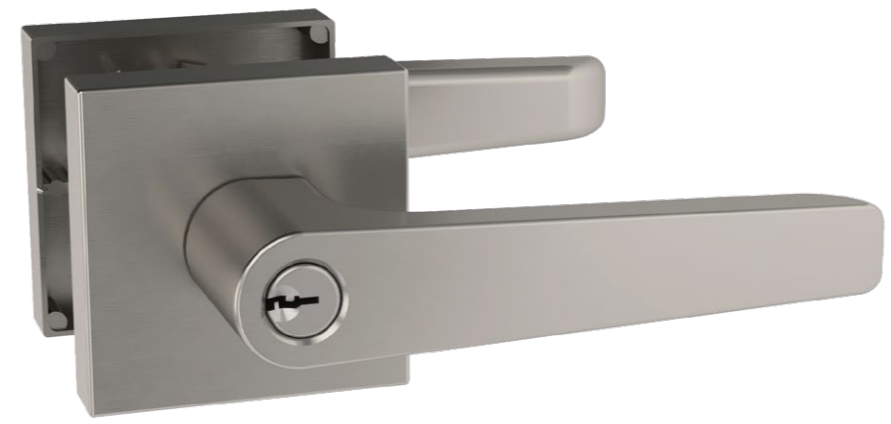
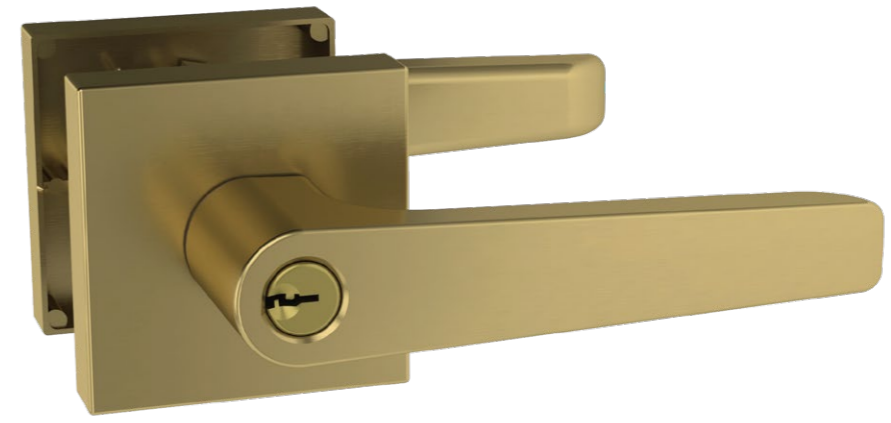


ADVANCE  
ADVANCE

HP5273ET

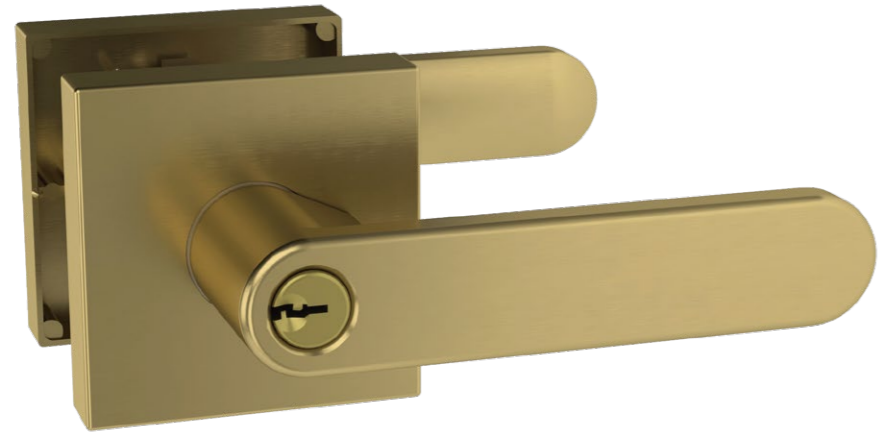
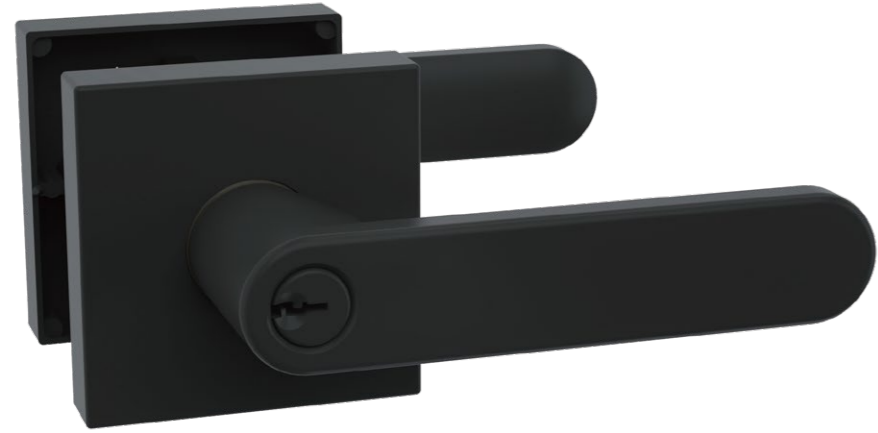


HP5274ET

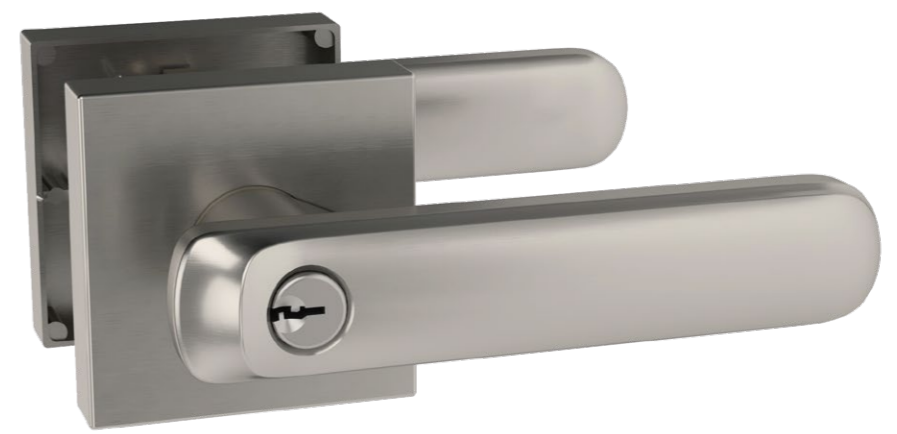
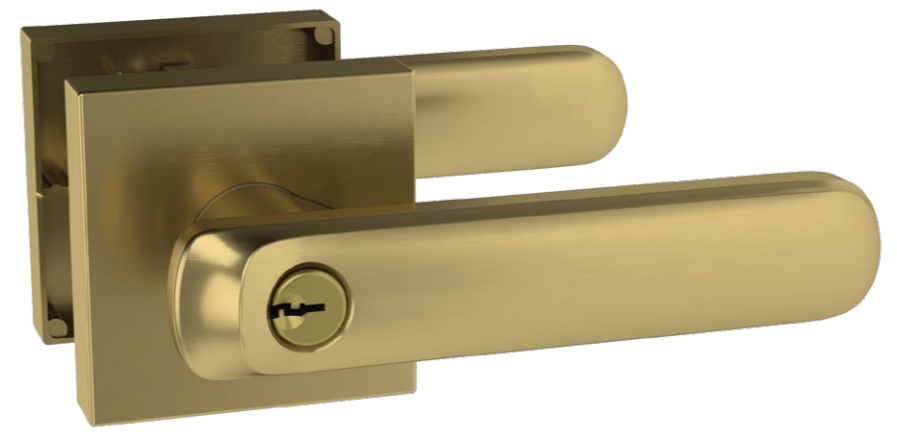
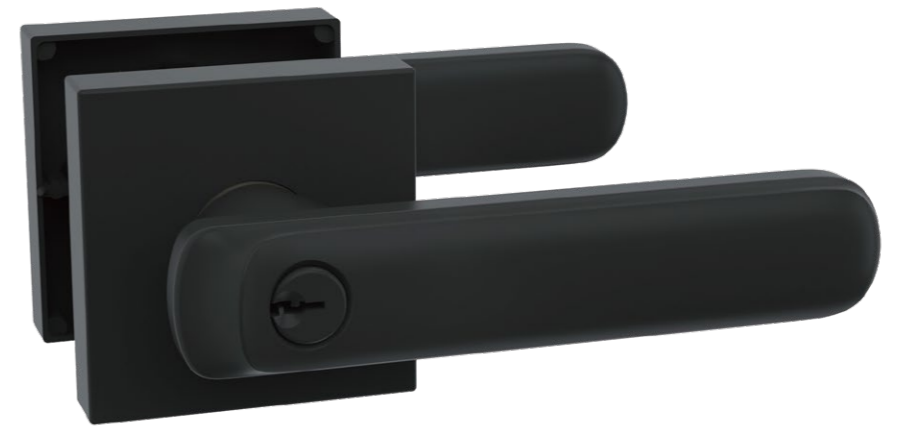


A  
D  
V  
A  
N  
C  
E

HP5275ET



HP5276ET



ADVANCE  
ADVANCE



T311986ET



HP527996BK



M416999BK



# TUBULAR LEVER LOCK

ANSI Grade 3

Exceeds 250,000 cycles



T3113BK

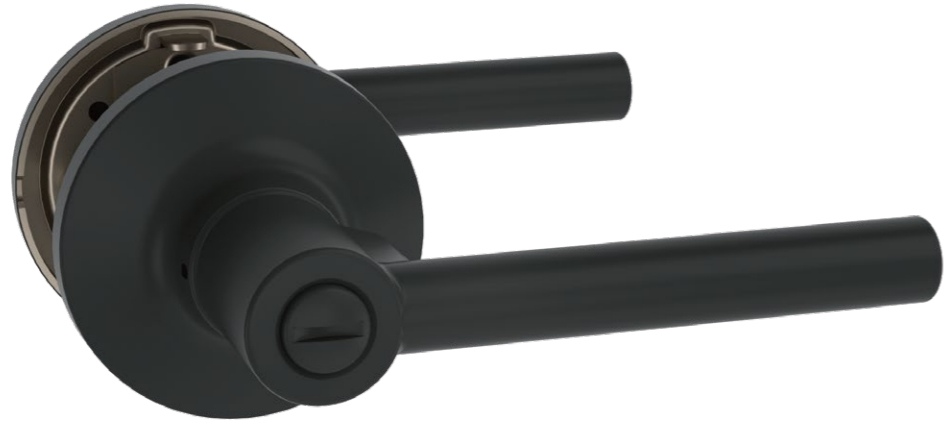


T3113ET



A  
D  
V  
A  
N  
C  
E

T3114BK

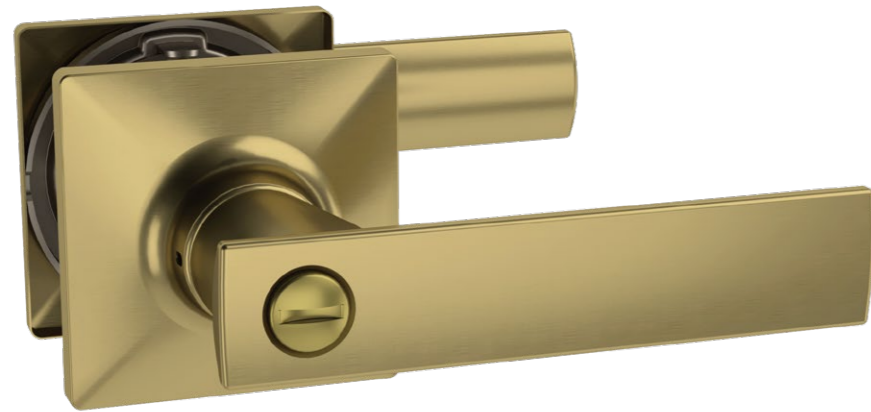


T3114ET



A  
D  
V  
A  
N  
C  
E

T3215BK



T3215ET



A  
D  
V  
A  
N  
C  
E

T3111BK



T3111ET

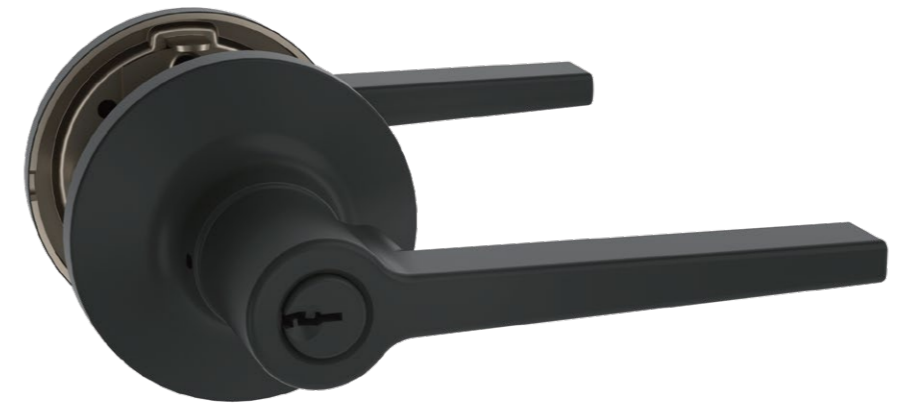


A  
D  
V  
A  
N  
C  
E

T3112BK



T3112ET



A  
D  
V  
A  
N  
C  
E



HP517999PS



HP517998ET



T311995ET



T311994PS



T311999ET



T311997ET



T311993ET



T311992ET

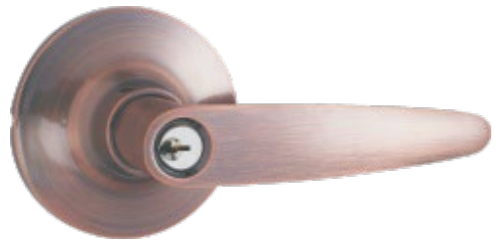


T311991ET



T311990BK

A  
D  
V  
A  
N  
C  
E



T311989ET



T311988ET



T311989BK



T311987ET



T311989PS

A D V A N C E

A D V A N C E





# TUBULAR KNOB LOCK

ANSI Grade 3

Exceeds 250,000 cycles



K3101BK



K3101ET



A  
D  
V  
A  
N  
C  
E

K3103BK



K3103ET



A  
D  
V  
A  
N  
C  
E

K3104BK



K3104ET



A  
D  
V  
A  
N  
C  
E



K320999ET



K310999ET



K310998ET



K310997ET



K310996ET

# CRYSTAL KNOB LOCK



A  
D  
V  
A  
N  
C  
E



K320995BK



K330994BK



K310993BK



K320992PS



K310991PS

# HANDLESET

ANSI Grade 3  
Exceeds 250,000 cycles

A D V A N C E



**G19ET+HP527999P**

**Material:**  
Zinc alloy

**Function:**  
Single handle  
Double handle  
Dummy handle

**Deadbolt:**  
Single cylinder  
Double cylinder



**G12ET+T311989P**

**Material:**  
Zinc alloy

**Function:**  
Single handle  
Double handle  
Dummy handle

**Deadbolt:**  
Single cylinder  
Double cylinder



**G11ET+K3101P**

**Material:**  
Zinc alloy

**Function:**  
Single handle  
Double handle  
Dummy handle

**Deadbolt:**  
Single cylinder  
Double cylinder

A  
D  
V  
A  
N  
C  
E

DEADBOLT

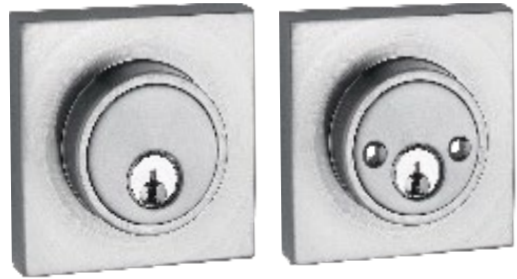




D23DC



D22SC



D22DC



D21SC



D21DC

# ELECTRONIC LOCKS



ADVANCE

ADVANCE





**Z06**

**Material:** Aluminum Alloy  
**Mortise:** Single Latch  
**Keyword Quantity:** 20 sets  
**Power Type:** 4 AA Alkaline Batteries  
**Applicable Temperature:** -20-60 °C



**LR10**

**Material:** ABS  
**Mortise:** Single Latch  
**Keyword Quantity:** 30 sets  
**Power Type:** 4 AA Alkaline Batteries  
**Applicable Temperature:** -20-60 °C



**Z07**

**Material:** Aluminum Alloy  
**Mortise:** Single Latch  
**Fingerprint Quantity:** 99 sets  
**Keyword Quantity:** 99 sets  
**Power Type:** 4 AA Alkaline Batteries  
**Applicable Temperature:** -20-60 °C

A  
D  
V  
A  
N  
C  
E

A  
D  
V  
A  
N  
C  
E



E030-SN-A

**Material:** Zinc Alloy / ABS  
**Mortise:** Single Latch  
**Keyword Quantity:** 100 pcs  
**Power Type:** 4 AAA Batteries  
**Applicable Temperature:** -30-65 °C



E030-ORB-AY

**Material:** Zinc Alloy / ABS  
**Mortise:** Single Latch  
**Keyword Quantity:** 100 pcs  
**Power Type:** 4 AAA Batteries  
**Applicable Temperature:** -30-65 °C

A  
D  
V  
A  
N  
C  
E



A  
D  
V  
A  
N  
C  
E

## CONTACTS

**Website:** [www.advance-hardware.com](http://www.advance-hardware.com)

**E-mail:** [sales@advance-hardware.com](mailto:sales@advance-hardware.com)

**Tel:** +86-571-85155568

**Fax:** +86-571-85155443

**Headquarters:**

1/F Dikuang Building, No. 508

Tiyuchang Road, Hangzhou,

Zhejiang, 310007, P.R. China